



Service that pays off for you!

Egli





Urs & Claudia Egli, Roland & Heidi Egli and their families 2022

Gebrüder Egli Maschinen AG



Urs & Claudia Egli, Roland & Heidi Egli 2002

«We focus on ongoing training of our staff, flat hierarchies, short decision-making processes and the continuous development of our various teams.»

«We develop, sell and install automatic quick coupler systems for excavator and associated excavator equipment. Advice on overall concepts for the machine park, complete job management and individual special projects are all part of our partnership with our customers.»

Long lasting service and quality since 1992: Gebrüder Egli Maschinen AG in Rossrüti CH, a family business with around 80 employees, develops and refines machines using the latest technologies to create high-performance for the construction industry. Our company attaches great importance to natural resources and promotes the recycling of building materials.



Long lasting service and quality

Egli in-house products



Egli concrete crusher

Egli magnet

Egli ripper tooth

Egli sorting grapple

Egli mast foundation grapple

Egli stone grapple



Egli backhoe bucket

Egli motor bucket

Egli loading arm

Egli pallet fork

Egli grading beam

Egli transport racks



The green Egli circle stands for the conservation of natural resources by promoting the recycling of building materials and the use of durable materials.
Info under www.gebr-egli.ch/recycling

Over 1'000
spare parts
available at

Egli Webshop

Egli services



consulting and planning



customised products



customer trainings



construction site automation



service assembly with bus



machine introductions



repairs



on-call service 7/24 h

«The valuable experiences
of our customers from
the rental park are
continually taken in account
in the development of our
equipments.»



Quick coupler/
automation

Egli Base

Längfeldweg 111a
2504 Biel/Bienne



Delivery & pick-up address
for Egli rental equipment

Quickly available

Eglirent

Egli rental park with
many attachments

Hydraulic service center
Hose service





Egli production



Sustainability through quality that pays off in the long term: we are particularly proud of our numerous Egli in-house products. In their production, we attach great importance to high-quality, durable materials and professional assembly. Thanks to many years of experience and close co-operation with our customers, we are constantly developing and building new products.



Egli design & development



The Egli design department develops and designs the company's own products. There is a close co-operation with the metalworking shop and the workshop. This means that the powerful and creative team is perfectly organised for individual customer requests and special designs.

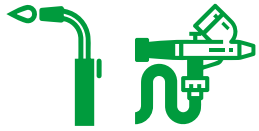


Egli workshop/rental park

Eglirent



In our large Egli workshop, excavator equipment is carefully prepared and service work is carried out with the utmost skill. Well-trained specialist guarantee a high standard of quality. To ensure that the machines last as long as possible, the oil in the machines is always changed (bio or mineral oil). Optimum results are achieved through close networking with metalworking, design & development and hydraulic!



Egli metalworking & varnishing

Egli



Qualified specialists are at work in the Egli metalworking shop at the highest level thanks to ongoing training. Here we weld, varnish and shape. To save time and costs, the competent team is supported by a grinding robot developed in-house!



Egli hydraulic/spare parts



Mobile workshops, set up in trucks and trailers, in which hydraulic hoses up to 2 inches can be manufactured on site, enabling smooth and fast service. Highly qualified specialists with many years of experience at Egli hydraulic ensure that orders are processed extremely efficient.



Egli service & installation



Specialists in the field of Egli service and installation are on the road all over Switzerland and ensure that our equipment is always operational. With optimally equipped service buses, maximum efficiency and flexibility is guaranteed.



Experts with basic technical training are travelling throughout Switzerland every day. New applications and innovative technology in the construction industry require a high level of consultancy and support during implementation on the construction site.

Find your Egli contact on our website:
www.gebr-egli.ch/aussendienst



The reliable Egli back office team deals with all matters relating to sales and product management support. The members of this department are mainly people with basic technical training, which ensures a high quality of advice. The accounting, personnel and marketing departments support the team in its daily work. In the Egli Rental park, order processing is coordinated throughout Switzerland and high targets are set every day in terms of delivery time and accuracy of fit.



Thanks to continuous training, Gebrüder Egli Maschinen AG is well equipped for future challenging task in the best possible way. Therefore, we are a proud training company with currently 5 Egli apprentices. We train construction equipment mechanics VET, production mechanics VET and design engineers VET. This is great fun for everyone involved! At the heart of these very exciting and promising apprenticeships is the fascination for technology.

The application areas of our products

Road construction:



Civil engineering:



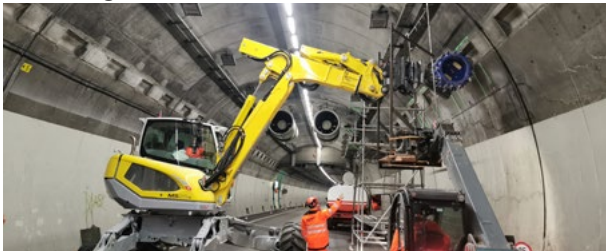
Deconstruction:



Forestry:



Tunneling:



Rail construction:



Recycling:



Mining:



Special civil engineering:



Gardening:



Cover:



Pipeline and sewer construction:





Egli rental park: wide range at fair prices

All attachments in our portfolio can also be rented. A large selection of rental equipment is ready for use and is constantly updated with the latest technology.
Fast, competent, flexible!

Egli training courses: more knowledge, more safety

Professional commissioning with the corresponding documentation, the maintenance of the units and regular training ensure that our customers carry out their work safely, preventing damage and accidents.



Gebrüder Egli



Gebrüder Egli Maschinen AG
Konstanzerstrasse 14
CH-9512 Rossrüti / Wil SG



+41 (0)71 913 85 60

www.gebr-egli.ch

info@gebr-egli.ch

